

An extensive range of  
equipment and services  
for the healthcare industry



# Introduction to Teasdale



## The heartbeat for healthcare equipment for over 40 years



Teasdale Healthcare Equipment have been providing specialist healthcare equipment solutions to both the NHS, private sector and international healthcare organisations for nearly half a century. Working alongside prominent healthcare professionals, Teasdale have designed and developed a range of products

specific to the needs of patients and hospital professionals in the ever-changing healthcare environment.

All Teasdale products are designed and manufactured in the UK. We pride ourselves on quality and create every one of our products under our company ethos of “care in the detail”. We ensure that every single element of the manufacture and design is created with the very best quality materials, which are sourced exclusively from UK suppliers. Teasdale products are developed with quality and longevity in mind allowing hospitals to save money in the long term.

Teasdale products work to support healthcare professionals in their work to assist patient positioning and lessening the patient trauma during surgery. A variety of our products have been developed through bespoke requests by surgeons and healthcare professionals via our research and development team that have developed into stock products within our catalogue. At Teasdale we are always willing to listen to the requirements of healthcare professionals, working together to provide solutions to specific needs.

Market leaders in the design and development of pressure care solutions Teasdale Healthcare Equipment have led the way in ensuring patient care and recovery is at the forefront of our product development. Leading the way in pressure care solutions, Teasdale have developed a wide range of pressure relieving mattresses, positioning aids and gels.

The family owned, UK based, independent health care equipment manufacturer is still run by third generation Emma Teasdale who has been involved with the business from an early age working alongside her father Barry Teasdale since the early 80's. Emma has worked in every part of the business from the ground up. Owner and Managing Director Emma is still very hands on working alongside her team of staff based at their Stockport offices.

Teasdale Healthcare Equipment are Investors in UK Manufacture, are 9001:2015 and CE compliant and are environmentally responsible, committed to reducing our carbon footprint.

**Teasdale Healthcare Equipment Ltd**

Unit 8, Crosland Industrial Estate  
Stockport Road West  
Bredbury  
Stockport  
SK6 2BR

**T: 0161 480 5779**

E: [sales@teasdaleltd.co.uk](mailto:sales@teasdaleltd.co.uk)  
W: [www.teasdale-healthcare.com](http://www.teasdale-healthcare.com)



# Contents



## An extensive range of equipment and services for the healthcare industry

Introduction to Teasdale	02	Metalwork Furniture	24
Contents	03	• Surgeon Stools & Steps	25
Operating Theatre Mattresses	04	• Surgeon Chair & Surgeon Stools with Backrest	26
• Operating Table Mattresses	05	• Accessories	27
• Mentor Dynamic Operating Table Mattress & Pump	06	• Dressing & Linen Trolleys	28
• Patient Warming Technology	07	• Instrument Trolleys	29
Operating Theatre Accessories	08	• Trolleys & Accessories	30
• Arm Supports	09	• Bowl Stands & Accessories	31
• Body Supports	10	• Transfusion Stands	32
• Pelvic & Lateral Supports	11	Trolley Mattresses & Side Rail Covers	33
• Leg Supports	12	Transfoam Active Hybrid Trolley Mattress	34
• Lithotomy Boots	13	Personal Protective Equipment	35
• Head Supports	14	Arm / Leg Retainers & Anaesthetic Tube Holders	36 - 37
• Mayfield Cranial Stabilisation	15	Tourniquets & Connectors	38
• Body Supports	16	Slide Sheets	39
• Patient Positioners & Accessories	17		
Pressure Relieving Gels	18		
• Gel Operating Table Mattress Covers & Head Supports	19		
• Gel Body, Leg & Arm Supports	20		
• Leg / Foot Rests & Accessories	21		
Accessory Clamps	22		
Evacuated Bead Supports	23		

# Operating Theatre Mattresses

Operating Theatre Mattresses are manufactured from high resilience polyurethane interiors with a choice of either Neoprene or multi-stretch Polyurethane cover.

All materials used in manufacture are latex free and comply with all British and European standards.

- Manufactured to customer specification where required
- Made to fit all table models
- Can be made to any size and thickness
- All mattresses are x-ray translucent
- Visits from our Technical Sales Team are available to assist in measuring your mattress
- Theatre audits are available on request

## WE CAN ALSO SUPPLY:

- Pressure relieving 'memory foam' versions of our mattresses for medium to high risk patients  
When ordering please add PR after the code
- Loose vapour permeable covers with welded seams waterproof, easy to clean and multi-stretch.  
When ordering please add DC after the code

## WE MANUFACTURE MODELS:

- Eschmann, Maquet, QA and others on request.

## OTHER MATTRESSES AVAILABLE:

- Catheter labs
- X-Ray tables
- MRI scanners
- Endoscopy



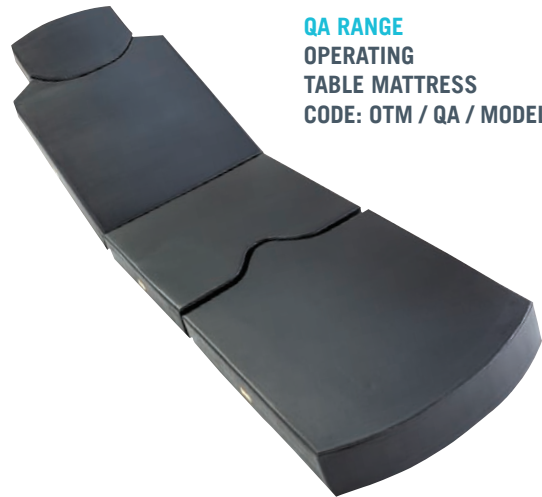
SLIP AND NON-SLIP OPTIONS  
AVAILABLE FOR ALL MATTRESSES

PLEASE STATE  
MODEL AND SERIAL NUMBER  
WHEN ORDERING



# Operating Table Mattresses

TO ORDER OPERATING TABLE MATTRESSES USE CODE: OTM / RANGE / MODEL



**QA RANGE**  
OPERATING  
TABLE MATTRESS  
CODE: OTM / QA / MODEL



**MR RANGE**  
OPERATING  
TABLE MATTRESS  
CODE: OTM / MR / MODEL



**T20, T30, T50**  
UK OPERATING  
TABLE MATTRESS  
CODE: OTM / T20  
TRUNK SECTION: ALL MODELS



**CATHETER LAB MATTRESS**  
CODE: CLM01



**MAQUET RANGE**  
EUROPEAN OPERATING  
TABLE MATTRESS  
CODE: OTM / MAQUET / MODEL



OPTIONAL  
BLUE COVER  
AVAILABLE

## GEL OPERATING TABLE MATTRESS COVERS

- MG/150** COMPLETE - ALL MODELS  
PLEASE STATE RANGE AND MODEL  
WHEN ORDERING AND IF YOU REQUIRE A 1 OR 3 PIECE  
(3 PIECE CONSISTS OF A SEPARATE HEAD, TRUNK  
AND FOOT SECTION)
- MG/151** HEAD SECTION - ALL MODELS
- MG/152** TRUNK SECTION - ALL MODELS
- MG/152C** TRUNK SECTION - ALL MODELS WITH PERINEAL CUT-OUT
- MG/153** FOOT SECTION - ALL MODELS

IF OPTIONAL BLUE COVER (SHOWN BOTTOM RIGHT IMAGE) IS REQUIRED  
PLEASE ADD DS AT THE END OF YOUR PRODUCT CODE

# Mentor Dynamic Operating Table Mattress & Pump

Patients are at particular risk from pressure ulcers during lengthy procedures and also during any surgery in which the patient's circulation is compromised, such as:

- Vascular
- Cardiac
- Gynaecology and Colorectal
- Maxillo Facial
- Micro Surgery

Using technology developed to prevent this problem in ICU and Community Settings, the Mentor Dynamic Operating Mattress uses a system of 'active' cells which deflate and inflate in sequence designed to provide the optimum preservation of circulation during surgery.

## DYNAMIC OPERATING TABLE AIR MATTRESS AND PUMP COMPLETE

TT/163

- Upper weight limit 41 stone 260kg
- Minimum weight limit 3 stone 19kg
- Range of sizes to fit all operating tables
- Range sizes to fit all beds
- Category - High Risk
- Unique Static/Flotation Mode for use during micro surgery where no movement is required
- Waterproof, multi-stretch vapour permeable cover
- Half and Three Quarter Lengths available

ASK  
ABOUT OUR  
SERVICE  
PLANS

STATIC  
FOAM HEAD  
SECTION  
AVAILABLE FOR  
MAXILLOFACIAL  
SURGERY



TT/163

## DYNAMIC OPERATING TABLE MATTRESS AND PUMP COMPLETE

(MANUFACTURED TO FIT ANY OPERATING TABLE)

REPLACEMENT COMPONENT PARTS AVAILABLE, PLEASE CONTACT US FOR ASSISTANCE.

# Patient Warming Technology

The Medwarm warming systems use state of the art technology and the latest developments in carbon fibre materials and microprocessors to avoid hypothermia in operating theatres, neonatal intensive care departments, maternity wards as well as orthopedic departments and ambulances through stabilizing or raising the peripheral temperature of the patient carrying the risk of hypothermia effectively to provide a warm and comfortable environment. The Medwarm efficient, professional and safe carbon fibre technology is also X-RAY translucent and can be used throughout operations where X-RAYS are used.

- Adult & Pediatric Patient Warming Systems • Neonatal Patient Warming Systems
- Transport Patient Warming Systems With Battery

TYPE	SIZE	WEIGHT	DESCRIPTION
<b>CONTROL UNITS</b>			
W-500D	187 x 282 x 87mm	5.8kg	Dual Channel
W-300	187 x 282 x 87mm	5.4kg	Single Channel
W-150	72 x 104 x 26mm	1.25kg	With Adapter
W-150T (Large)	187 x 282 x 87mm	4.4kg	With Battery
W-150T(Small)	187 x 168 x 87mm	2kg	With Battery

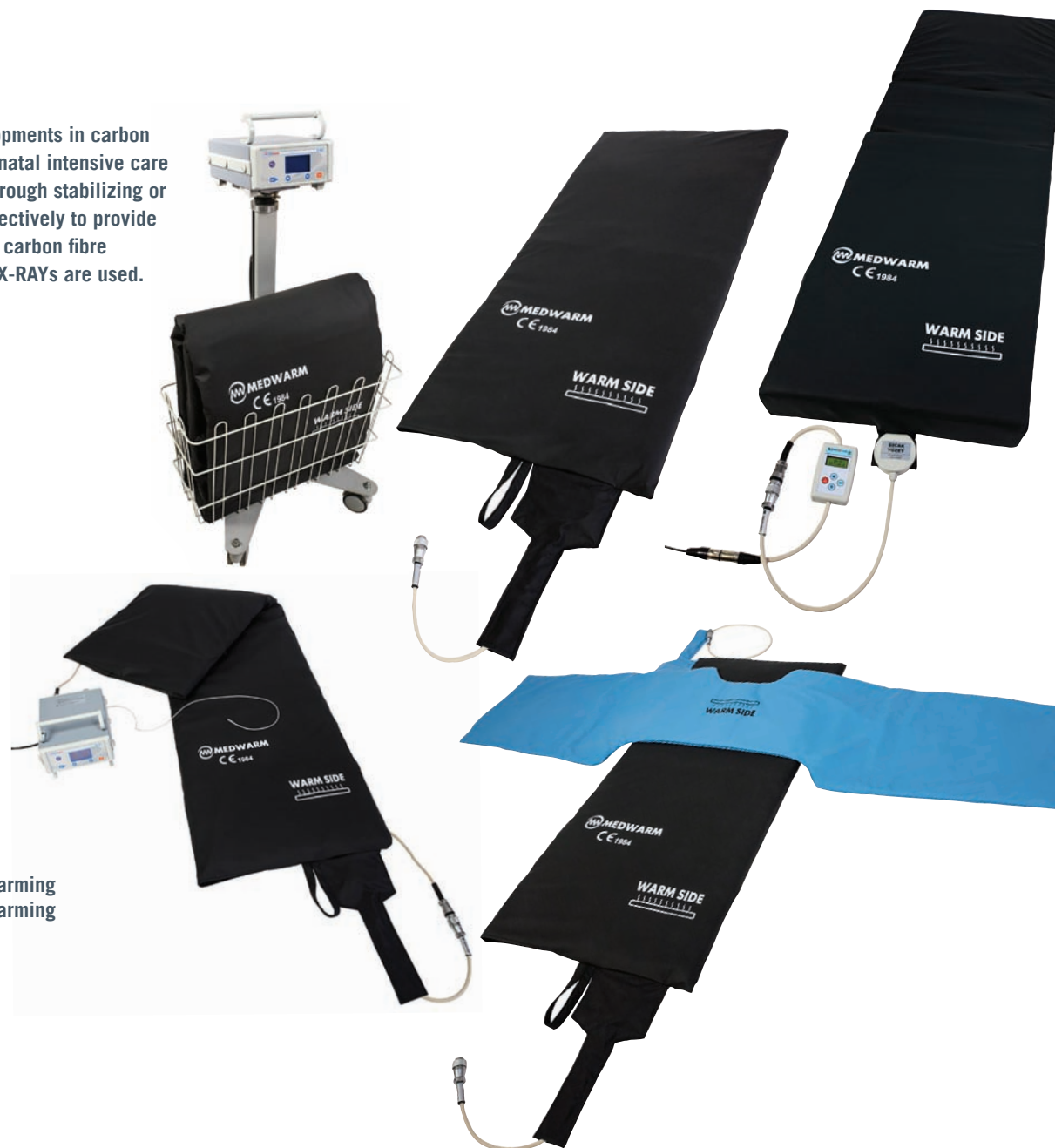
## WARMING MATTRESSES

IM-190MS	190 x 50 x 3cm (with foam)	4kg	Large size
IM-150MS	150 x 50 x 3cm (with foam)	3.3kg	Medium size
IM-120MS	120 x 50 x 3cm (with foam)	2.25kg	Medium size
IM-80MS	80 x 50 x 3cm (with foam)	1.9kg	Small size
IM-190M	190 x 50cm	2.75kg	Large size
IM-150M	150 x 50cm	1.9kg	Medium size
IM-120M	120 x 50cm	1.75kg	Medium size
IM-80M	80 x 50cm	1.25kg	Small size

## BLANKETS

IM-190B	190 x 100cm	2.3kg	Large size
IM-180BAS	180 x 45cm	1.1kg	Arm-Shoulder warming
IM-150BAS	150 x 45cm	0.85kg	Arm-Shoulder warming
IM-180B	180 x 80cm	2.0kg	Large size
IM-150B	150 x 80cm	1.6kg	Medium size
IM-120B	120 x 80cm	1.1kg	Medium size
IM-85DB	85 x 55cm (x2)	1.4kg	Small size
IM-80B	80 x 70cm	0.75kg	Small size

EXTENSION CABLE LENGTH 2.5m PAD CABLE LENGTH 0.5m





# Operating Theatre Accessories

All Teasdale Metal Operating Table Accessories are manufactured in-house using medical grade, non magnetic Stainless Steel with a greatly improved resistance to corrosion over other Stainless Steels and are designed to fit all table models.

- High quality Stainless Steel
- Designed to fit all table models
- No sharp flaking as with plating
- Replacement pads can be supplied separately
- Can be custom made to meet your requirements
- High quality accessory pads, fully bonded, no stitching with interior high resilient foam

## OPERATING TABLE SUPPORTS

All Teasdale Anti Static supports/accessories are manufactured from Polyurethane interiors with an Anti Static Neoprene covering. All materials used are Latex free and comply with all British and European standards.

- Manufactured to customer specification where necessary
- Manufactured to all current required British and European standards
- All materials are Latex free
- Quality Assurance registration to ISO 9001:2015
- CE marked



ALL ANTI STATIC ACCESSORY PADS COME FULLY BONDED FOR INFECTION CONTROL - NO STITCHING.



# Arm Supports



## ROTATING ARM TABLE

- TT/448 COMPLETE WITH PAD
- TT/449 REPLACEMENT SUPPORT PAD
- TT/449S REPLACEMENT STRAPS (PAIR)



## NARROW ARM TABLE

- TT/450 COMPLETE WITH PAD
- 24" (610mm) x 8" (203mm)
- TT/134 REPLACEMENT SUPPORT PAD



## SQUARE ARM TABLE

- TT/451 COMPLETE WITH PAD
- 17" (432mm) x 17" (432mm)
- TT/135 REPLACEMENT SUPPORT PAD



## LARGE X-RAY ARM TABLE

- TT/451L COMPLETE WITH PAD
- 27" (686mm) x 19" (483mm)
- TL/135 REPLACEMENT SUPPORT PAD
- TT/419 REPLACEMENT TELESCOPIC LEG

OPTIONAL  
GEL COVERS  
AVAILABLE  
SEE PAGE  
18



## ARM SUPPORT

- TT/404 (CARTER BRAINE) COMPLETE WITH PAD
- TT/131 REPLACEMENT SUPPORT PAD



## 'D' SHAPED ELBOW SUPPORT

- TT/174 COMPLETE WITH PAD
- TT/175 REPLACEMENT 'D' SHAPED ELBOW  
SUPPORT PERSPEX BOARD
- TT/176 REPLACEMENT 'D' SHAPED ELBOW  
SUPPORT PAD



## SHOULDER SUPPORT

- TT/101 COMPLETE WITH PADS
- TT/102 SHOULDER SUPPORT PADS (PAIR)

SUPPORTIVE  
BASE FOAM WITH  
VISCO FOAM TOPPER  
HELPING PREVENT  
NERVE DAMAGE

# Body Supports



## SALFORD SEAT

**TT/418** COMPLETE WITH PAD  
24" (610mm) x 8" (203mm)  
ANTI STATIC PAD CAN BE REPLACED,  
PLEASE CONTACT US FOR ASSISTANCE



## WILSON FRAME

**TT/106** COMPLETE WITH PADS  
**TT/124** REPLACEMENT SUPPORT PADS



## 3 PIECE LATERAL BRACE

**TT/402** COMPLETE SET WITH PADS  
**TT/140** REPLACEMENT SET OF SUPPORT PADS



## OPERATING TABLE SIDE RAILS

**TT/411** COMPLETE WITH PAD  
**TT/411P** REPLACEMENT SIDE RAIL PAD  
24" (610mm) x 8" (203mm)



## PATIENT RESTRAIN STRAPS (PAIR)

**TT/455** 4" (102mm) W, WITH CLAMPS  
PLEASE STATE OPERATING  
TABLE MODEL



## LATERAL SUPPORT (CURVED)

**TT/403** LATERAL SUPPORT (CURVED)  
COMPLETE WITH PAD  
**TT/128** REPLACEMENT SUPPORT PAD  
8" (200mm) W x 10" (250mm) H

# Pelvic & Lateral Supports



## PELVIC SUPPORT

**TT/400** COMPLETE WITH PAD

**TT/127** REPLACEMENT SUPPORT PAD  
11" (280mm) H x 4" (100mm) DIA



## BUTTOCK SUPPORT

**TT/401** COMPLETE WITH PAD

**TT/127** REPLACEMENT SUPPORT PAD  
11" (280mm) H x 4" (100mm) DIA



## ILIAC SUPPORT

**TT/412** ILIAC SUPPORT COMPLETE WITH PADS  
AND ACCESSORY CLAMP. (PLEASE STATE TABLE MODEL)

**TT/413** REPLACEMENT PADS (PAIR)

**TT/412C** REPLACEMENT CYLINDER CLAMPS



## LATERAL SUPPORT (FLEXIBLE)

**TT/414** COMPLETE WITH PAD AND CLAMP  
(PLEASE STATE TABLE MODEL)

**TT/415** REPLACEMENT SUPPORT PAD 5.5" (140mm) DIA



## HIP PROP

**TT/158** COMPLETE WITH PADS AND ACCESSORY CLAMP  
(PLEASE STATE TABLE MODEL)

**TT/159** REPLACEMENT SUPPORT PADS 120mm W x 120mm H  
SHOWN WITH GEL PADS, BLACK NEOPRENE PADS  
AS STANDARD



## PELVIC SUPPORT (PUSHER)

**TT/430** COMPLETE WITH PAD

**TT/415** REPLACEMENT SUPPORT PAD 5.5" (140mm) DIA



# Leg Supports



## ANAESTHETIC SCREEN

TT/407 COMPLETE WITH PAD

TT/111 REPLACEMENT SUPPORT PAD



## KNEE CRUTCH SUPPORTS (PAIR)

TT/454 COMPLETE WITH PADS

TT/113 REPLACEMENT SUPPORT PADS



## LITHOTOMY POLES CURVED

TT/410 COMPLETE WITH PADS AND STRAPS (PAIR)

TT/109 REPLACEMENT SLEEVES (PAIR)

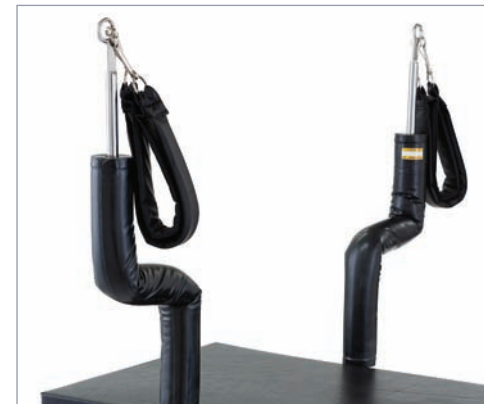
18" (457mm) LONG

TT/110 REPLACEMENT SLEEVES (PAIR)

22" (559mm) LONG

TW/184 REPLACEMENT STRAPS (PAIR)

PADDED WITH 'D' CLIP



## LITHOTOMY POLES CRANKED

TT/405 COMPLETE WITH PADS AND STRAPS (PAIR)

TT/109 REPLACEMENT SLEEVES (PAIR)

18" (457mm) LONG

TT/110 REPLACEMENT SLEEVES (PAIR)

22" (559mm) LONG

TW/184 REPLACEMENT STRAPS (PAIR)

PADDED WITH 'D' CLIP



## OXFORD KNEE CRUTCH

TT/107 COMPLETE WITH PAD

TT/171 REPLACEMENT SUPPORT PAD



## FOOT REST

TT/416 COMPLETE WITH PAD

TT/417 REPLACEMENT SUPPORT PAD

8" (203mm) x 4" (102mm) DIA



## ANKLE ARTHROSCOPY

TT/103 COMPLETE WITH PAD

(PLEASE STATE TABLE MODEL)

TT/104 REPLACEMENT SUPPORT PAD

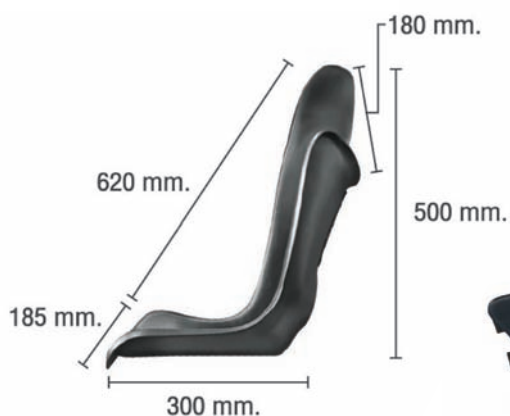
# Lithotomy Boots

Our stirrups are designed from engineering specifications that rely on basic safety regulations, easy to use medical requirements and precise body adjustment.

Our stirrups are designed to promote safe and proper positioning during surgical procedures requiring multiple positioning i.e. robotic, gynaecology, urologic and laparoscopic procedures.

## SPECIFICATIONS OF STIRRUPS FOR ADULTS

- Lithotomy Range  $+70^{\circ}/-25^{\circ}$
- Abduction Range  $+25^{\circ}/-5^{\circ}$
- Boot Radius adjustment  $+23^{\circ}/-23^{\circ}$
- Boot Range adjustment 24 cm
- Handle Squeeze
- Patient weight limit 72 lb (160 kg)
- Weight of product (set) 16 kg



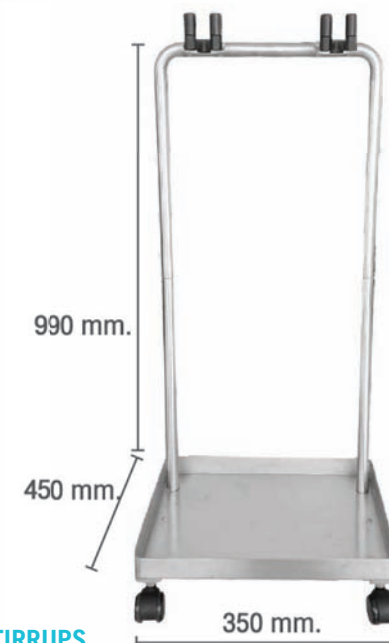
**ABS BOOT**  
01ZX210019



**PAD FOR ABS BOOT**  
P1ZX210005 LEFT  
P1ZX210006 RIGHT



**LITHOTOMY BOOT**  
ST/102



**TROLLEY FOR STIRRUPS**  
G13ZX41B171

**UNIVERSAL CLAMP TYPE 2**  
G13ZX326172

# Head Supports



## THEATRE PILLOW

**TT/136** ANTI STATIC PILLOW  
OTHER PRINT OPTIONS AVAILABLE ON REQUEST.



## HEAD RING

**TT/119** ADULT HEAD RING 8" (203mm) OD  
**TT/120** CHILD HEAD RING 6" (152mm) OD



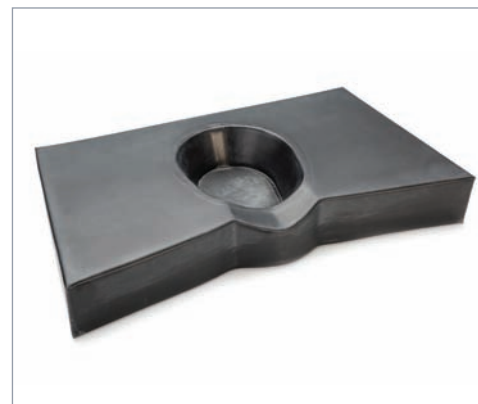
## HORSESHOE HEAD REST

**TT/122** ADULT HORSESHOE HEAD REST  
8" (203mm) OD  
**TT/123** CHILD HORSESHOE HEAD REST  
6" (152mm) OD



## OPHTHALMIC HEAD SUPPORT

**TT/142** OPHTHALMIC HEAD SUPPORT  
PLEASE SPECIFY SIZE REQUIRED



## RUBENS HEAD SUPPORT

**TT/156** ADULT RUBENS HEAD SUPPORT  
**TT/157** CHILD RUBENS HEAD SUPPORT



## WHITLOCK HEAD REST

**TT/155** WHITLOCK HEAD REST (ADJUSTABLE)



# Mayfield Cranial Stabilisation

This device is designed to meet EU safety standards. It is lightweight and manufactured from aluminium alloy which is resistant to erosive agents and has a high force bearing capacity.

Cranial Stabilisation Set  
with Horseshoe  
G13ZX221172



Cranial Stabilisation Set  
with Skull Clamp  
G13ZX221171



**B1ZX221173**  
**ADAPTOR BAR**  
EASY TO ATTACH  
SECURE AND PRECISE



**B1ZX221176**  
**HORSESHOE HEAD REST**  
CRANIAL SUPPORT IN THE PRONE OR SUPINE  
POSITION FOR ADULTS AND OLDER CHILDREN



**B1ZX221178**  
**ADULT SKULL PINS**  
SKULL PIN FOR USE WITH THE SKULL  
CLAMP FOR CRANIAL FIXATION.  
REUSABLE

**B1ZX221179**  
**PAEDIATRIC SKULL PINS**



**G13ZX45117**  
**HAND REST BAR TYPE 4**  
DEVICE IS ADJUSTABLE AND  
COMBINATIONS ENSURE ERGONOMIC  
WORKING CONDITIONS AND  
ADJUSTABLE HEIGHT UP TO 1,030mm



**B1ZX221175**  
**SWIVEL ADAPTOR**  
ROTATE IN AN OPTIMAL FLEXIBILITY 360°  
TILT ADJUSTMENT IN ANY AXIS



**B1ZX22117A**  
**SKULL CLAMP**  
CRANIAL FIXATION WITH ADJUSTABLE RANGE  
WHICH ACCOMMODATES FOR SKULL.  
SIZE SCREW TORQUE 20, 40, 60 AND 80 LB



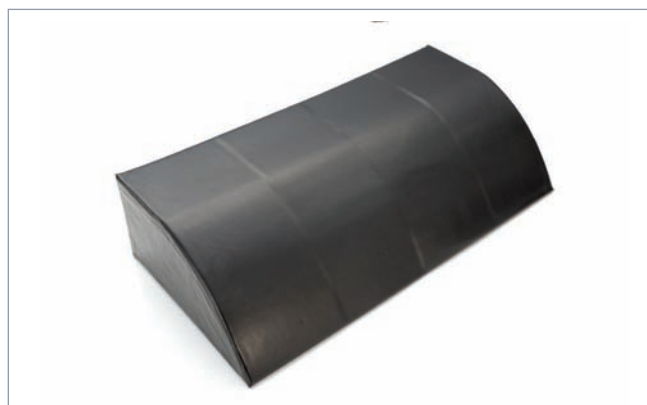
**B1ZX221177**  
**HAND REST BAR SET**  
CAN BE ADJUSTED FOR COMFORT  
DURING LONG SURGERY TIME

# Body Supports



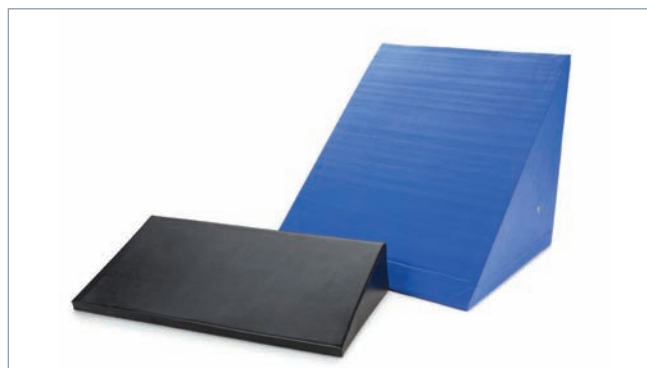
## NISSAN THIGH STRAPS

- TT/170** REGULAR 20" (508mm) x 5" (127mm) x 1" (25mm)
- TT/171** BARIATRIC 30" (762mm) x 6" (152mm) x 1" (25mm)
- TT/172** REPLACEMENT CLAMPS (PAIR)



## SACRAL REST

**TS/101** SACRAL REST



## POSITIONING WEDGES

- TT/114** CRAWFORD POSITIONING WEDGE  
12" (305mm) x 22" (559mm) x 5" (127mm) H
- TT/114L** ANTI STATIC POSITIONING WEDGE  
22" (559mm) x 20" (508mm) x 19" (483mm) H  
WEDGES CAN BE MANUFACTURED IN COVERS BLACK, BLUE AND OTHER COLOURS UPON REQUEST



## LAMINECTOMY SUPPORT (MONTREAL)

- TT/188** ADULT 38" (965mm) x 19" (483mm) x 5" (127mm)  
DOWN TO 2.5" (63.5mm)
- TT/190** CHILD 28" (711mm) x 16.5" (420mm) x 4.5" (115mm)  
DOWN TO 2" (51mm)
- TT/188/ BARI** BARIATRIC 38" (965mm) x 22" (559mm)  
x 5" (127mm) DOWN TO 2.5" (63.5mm)  
LARGER TORSO CUT OUT MADE TO REQUIREMENTS



## 'D' PILLOW

- TT/115** 12" (305mm) L x 6" (152mm) x 3" (76mm) H
- TT/116** 15" (381mm) L x 6" (152mm) x 3" (76mm) H
- TT/117** 19" (483mm) L x 6" (152mm) x 3" (76mm) H
- TT/118** 22" (559mm) L x 6" (152mm) x 3" (76mm) H

# Patient Positioners and Accessories



## HEEL PROTECTORS

- SG/100** ALL COTTON BLUE (LAUNDER)  
**SG/101** ALL P.U. BLUE (WIPE CLEAN)  
**SG/102** ALL P.U. BLACK (WIPE CLEAN)



## HEEL REST TURRET

- TT/125** HEEL REST TURRET DOUBLE (ONE-PIECE)  
**TT/126** HEEL REST TURRET (PAIR)



SIZES ARE ONLY A GUIDE, PADS CAN BE MADE TO ANY SIZE/THICKNESS

## GENERAL PURPOSE ANTI STATIC PAD

- TT/206** 5" (127mm) x 5" (127mm) x 1" (25mm)  
**TT/207** 7" (178mm) x 7" (178mm) x 1" (25mm)  
**TT/208** 9" (229mm) x 9" (229mm) x 1" (25mm)  
**TT/209** 11" (279mm) x 11" (279mm) x 1.5" (38mm)



BOTH SIZES AND REPLACEMENT STRAPS ARE AVAILABLE IN ANTI STATIC BLACK OR NON ANTI STATIC BLUE - PLEASE STATE REQUIREMENTS

## CHARNLEY ABDUCTION WEDGE

- TT/209A** 16" (406mm) x 16" (406mm) x 6" (152mm)  
**TT/209B** 20" (508mm) x 16" (406mm) x 6" (152mm)  
**TT/209S** REPLACEMENT STRAPS (PAIR)



## SANDBAGS

- |  |  |
|--|--|
| <b>TT/143</b> 10" x 10" (254 x 254mm)    | <b>TT/144</b> 12" x 10" (305 x 254mm)    |
| <b>TT/145</b> 18" x 10" (457 x 254mm)    | <b>TT/146</b> 20" x 10" (508 x 254mm)    |
| <b>TT/147</b> 10" x 8" (254 x 203mm)     | <b>TT/148</b> 16" x 8" (406 x 203mm)     |
| <b>TT/149</b> 20" x 12" (508 x 305mm)    | <b>TT/150</b> 8" x 7" (203 x 178mm)      |
| <b>TT/151</b> 12" x 3" DIA (305 x 76mm)  | <b>TT/152</b> 12" x 4" DIA (305 x 102mm) |
| <b>TT/153</b> 14" x 4" DIA (356 x 102mm) | <b>TT/154</b> 16" x 3" DIA (406 x 76mm)  |



## VARICOSE VEIN BOARD

- TT/137** 2" (51mm) THICK PADS  
**TT/138** 3" (76mm) THICK PADS  
 PLEASE STATE TABLE MODEL



# Pressure Relieving Gels

Mentor Gels are manufactured from an exclusive compounded Elastomer Gel giving high three dimensional memory and support.

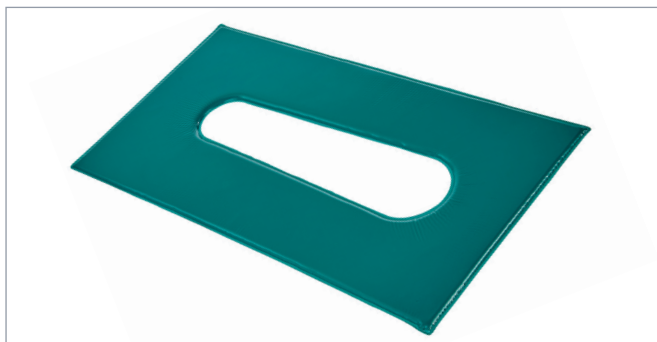
- Manufactured to customer specification where required
- Effective pressure redistribution
- Mattress covers made to fit all table models
- Multi-stretch polyurethane gel compound
- High grade outer cover to prevent tearing
- All materials used are Latex free
- Superior shock absorption compared to silicone gels making ideal for Orthopaedics
- CE marked



- Personalise your gels;  
4 colour options available; blue, red, lime green & orange;  
rear outer skin or standard green for easy departmental identification.  
Screen printing options also available.



# Gel Operating Table Mattress Covers & Head Supports

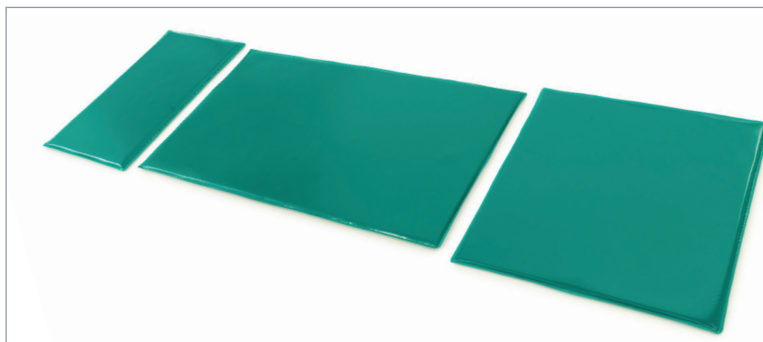


## GEL LAMINECTOMY COVER (MONTREAL)

**MG/126** ADULT 38" (965mm) x 19" (483mm) x 0.5" (13mm)

**MG/126B** CHILD 28" (711mm) x 16.5" (420mm) x 0.5" (13mm)

**MG/126C** BARIATRIC 38" (965mm) x 22" (559mm) x 0.5" (13mm)  
LARGER TORSO CUT OUT MADE TO REQUIREMENTS



## GEL OPERATING TABLE MATTRESS COVER

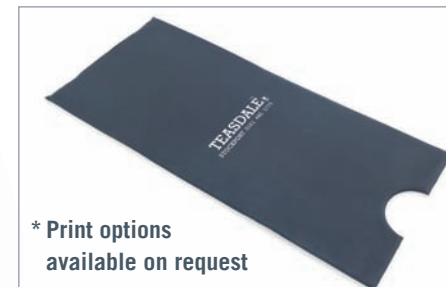
**MG/150** COMPLETE - ALL MODELS

PLEASE STATE IF YOU REQUIRE:

1 PIECE OR 3 PIECE

(3 PIECE CONSISTS OF A SEPARATE HEAD,  
TRUNK & FOOT SECTION)

**MG/151** HEAD SECTION



\* Print options  
available on request

**MG/152A** TRUNK SECTION WITH PERINEAL CUT OUT

**MG/152B** TRUNK SECTION WITHOUT PERINEAL CUT OUT

**MG/153** FOOT SECTION

PLEASE STATE TABLE MODEL AND SERIAL NUMBER WHEN ORDERING.  
BLUE COVER ON ALL ONE PIECE FULL GEL OPERATING MATTRESSES.  
OTHERWISE BLUE COVER IS AN OPTIONAL EXTRA, CREATING  
GREATER LONGEVITY. AVAILABLE WITH PRINT OPTION ON REQUEST.



## GEL HORSESHOE HEADREST

**MG/104** ADULT 8" (203mm) OD  
x 4" (102mm) ID x 2" (51mm)

**MG/105** CHILD 6" (152mm) OD  
x 3" (76mm) ID x 1.5" (38mm)

**MG/106** PAEDIATRIC 4" (102mm) OD  
x 2" (51mm) ID x 1" (25mm)



## GEL HEAD RING

**MG/100** ADULT 8" (203mm) OD  
x 4" (102mm) ID x 2" (51mm)

**MG/102** CHILD 6" (152mm) OD  
x 3" (76mm) ID x 1.5" (38mm)

**MG/103** PAEDIATRIC 4" (102mm) OD  
x 2" (51mm) ID x 1" (25mm)



## GEL FACE PRONE

**MG/156** 9" (228mm) x 8" (203mm) x 5"  
x (127mm)



## GEL MAYO TABLE COVER

**MG/129** 20" (508mm) x 15" (381mm)  
TO FIT STANDARD MAYO TRAY.  
CAN BE SUPPLIED WITH OR  
WITHOUT POCKET.  
CAN BE SUPPLIED TO OWN  
SPECIFICATION.

# Gel Body, Leg & Arm Supports



**LATERAL SUPPORT (CURVED) GEL PAD**

**MG/123** LATERAL SUPPORT (CURVED) GEL PAD

**MG/159** ILIAC SUPPORT GEL PADS (PAIR)

4" (100mm) DIA

**MG/161** ROUND LATERAL SUPPORT GEL PAD

5.5" (140mm) DIA

**MG/158** HIP PROP GEL PADS (PAIR)

8" (120mm) x 8" (120mm)



**LATERAL SUPPORT (TUDOR EDWARDS) GEL PAD**

**MG/123TU** REPLACEMENT GEL PAD

9" (229mm) x 7" (178mm)

x 0.5" (13mm)



**ARM SUPPORT (CARTER BRAINE) GEL PAD**

**MG/117** REPLACEMENT GEL PAD

9" (229mm) x 7" (178mm)

x 0.5" (13mm)



**BUTTOCK / PELVIC SUPPORT GEL COVER**

**MG/124** 11" (279mm) x 13" (330mm)

x 0.25" (6.3mm)

FOR USE IN CONJUNCTION WITH  
ANTI STATIC PAD



**BRACHIAL NERVE GEL PAD**

**MG/118** 7" (432mm) x 6" (152mm)

x 0.5" (13mm)

GEL PAD COVERED IN LATEX FREE  
MATERIAL, SHAPED FOR COMFORT  
WITH VELCRO FASTENING



**GEL ARM WRAP**

**MG/165** GEL ARM WRAP

SIZE MANUFACTURED TO REQUIRED  
SPECIFICATION. CAN BE PROVIDED  
WITH VELCRO FASTENING. PLEASE  
ADD VF ON TO THE END IF REQUIRED



**ARM / LEG RETAINER GEL PAD**

**MG/115** 5" (127mm) GEL PAD WITH POCKET

FOR ARM RETAINER; **AA/005**

**MG/116** 8" (203mm) GEL PAD WITH POCKET  
FOR ARM RETAINER; **AA/008, AA/008S**  
& **AA/008J**

**MG/141** 9" (229mm) GEL PAD WITH POCKET  
FOR ARM / LEG RETAINER **AA/011**  
ALTERNATIVE TO T-COSY PADS



**ARM TABLE GEL PAD COVERS**

**MG/112** GEL ARM TABLE PAD - NARROW

24" (610mm) x 8" (203mm)

x 0.375" (9.5mm)

**MG/113** GEL ARM TABLE PAD - SQUARE

17" (432mm) x 17" (432mm)

x 0.375" (9.5mm)

**MG/114** GEL ARM TABLE PAD - LARGE X-RAY

27" (686mm) x 19" (483mm)

x 0.375" (9.5mm)

FOR USE IN CONJUNCTION WITH  
ANTI STATIC PADS



# Leg/Foot Rests & Accessories



## GEL HEEL REST TURRET

**MG/130** GEL HEEL REST TURRET (PAIR)  
6" (152mm) x 3" (76mm) x 2" (51mm)



## ANTI-FATIGUE GEL MAT

**MG/155** HELPS ELIMINATE ACES & PAINS  
IN FEET, LEGS AND BACK  
23" (584mm) x 14" (356mm)



## GEL 'D' PILLOW

**MG/108** 10" (254mm) x 3" (76mm) x 1.5" (38mm)  
**MG/109** 12" (305mm) x 4" (102mm) x 2" (51mm)  
**MG/110** 10" (254mm) x 6" (152mm) x 3" (76mm)  
**MG/111** 15" (381mm) x 6" (152mm) x 3" (76mm)  
**MG/101** 15" (381mm) x 4" (102mm) x 2" (51mm)

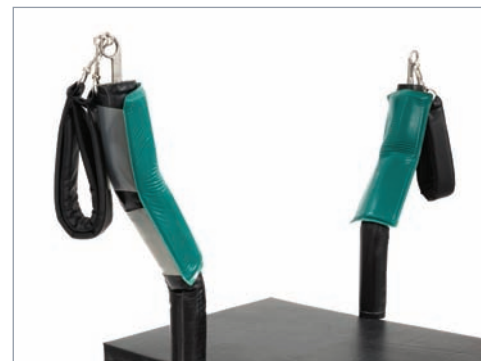
## GEL POSITIONING DOME

**MG/139** 10" (254mm) x 4" (102mm) x 3" (76mm)  
**MG/140** 15" (381mm) x 4" (102mm) x 3" (76mm)



## GEL PATIENT RESTRAIN STRAPS (PAIR)

**MG/455** 4" (102mm) W,  
COMPLETE WITH BUCKLES  
PLEASE STATE TABLE MODEL  
WHEN ORDERING



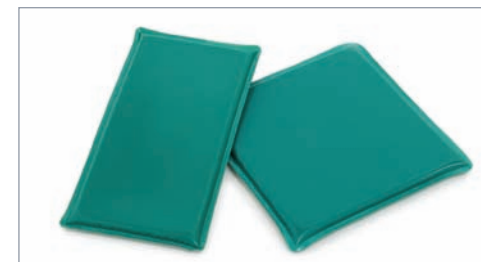
## GEL LITHOTOMY SLEEVE PADS & STRAPS

**MG/128D** LITHOTOMY STRAPS (PAIR) GEL  
COMPLETE WITH 'D' CLIPS  
(ALTERNATIVE TO ANTI STATIC STRAPS)  
**MG/131** LITHOTOMY SLEEVE PADS (PAIR)  
12" (305mm) x 0.25" (6.3mm)  
USE IN CONJUNCTION WITH  
ANTI STATIC SLEEVES



## GEL CIRCULAR PROTECTION PAD

**MG/136** 8" (203mm) DIA x 0.375" (9.5mm)  
**MG/137** 6" (152mm) DIA x 0.375" (9.5mm)  
**MG/138** 4" (102mm) DIA x 0.375" (9.5mm)



## GEL POSITION / PROTECTION PAD

**MG/119** 10" (254mm) x 5" (127mm) x 0.5" (13mm)  
**MG/120** 8" (203mm) x 8" (203mm) x 0.5" (13mm)  
**MG/121** 8" (203mm) x 4" (102mm) x 0.5" (13mm)  
**MG/132** 5" (127mm) x 5" (127mm) x 0.375" (9.5mm)  
**MG/133** 7" (178mm) x 7" (178mm) x 0.375" (9.5mm)  
**MG/134** 9" (229mm) x 9" (229mm) x 0.375" (9.5mm)  
**MG/135** 12" (305mm) x 12" (305mm) x 0.375" (9.5mm)



## GEL HEEL PROTECTOR (PAIR)

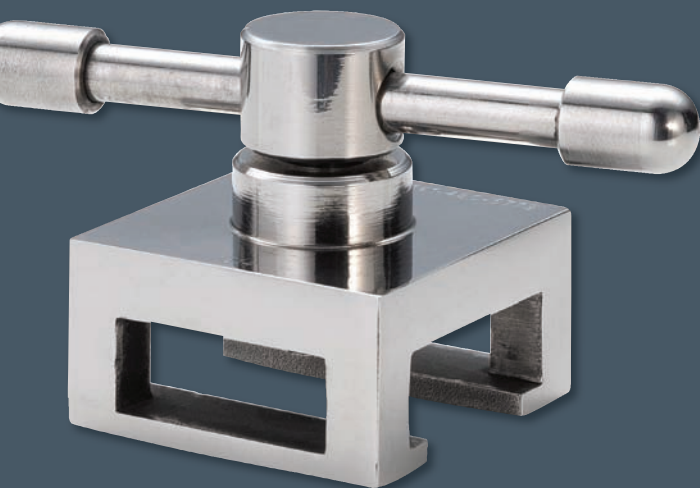
**MG/166** GEL ENCLOSED IN WIPE CLEAN  
P.U. COVER WITH VELCRO STRAPS



# Accessory Clamps

Stille and Schaerer clamps also available.

- Engineered using high grade Stainless Steel
- Available for all UK and European table models



## UK CLAMP

**TT/453** ACCESSORY CLAMP  
END ON FLAT BAR



## UK CLAMP

**TT/452** ACCESSORY CLAMP  
END ON ROUND BAR



## UK CLAMP

**TT/408** ROTARY ACCESSORY CLAMP  
TOOTHED  
**TT/408IC** ROTARY ACCESSORY CLAMP  
FOR ILIAC SUPPORT



## EUROPEAN CLAMP

**TT/456** ACCESSORY CLAMP  
END ON FLAT BAR



## EUROPEAN CLAMP

**TT/457** ACCESSORY CLAMP  
END ON ROUND BAR



## EUROPEAN CLAMP

**TT/458** ROTARY ACCESSORY CLAMP  
TOOTHED  
**TT/458IC** ROTARY ACCESSORY CLAMP  
FOR ILIAC SUPPORT



**CYLINDER CLAMPS  
FOR ILIAC SUPPORT  
TT/412C**

## ACCESSORY RAIL SIZES

- UK RAIL 30mm x 6mm
- EURO RAIL 25mm x 6mm
- BERCHTOLD RAIL  
25mm x 10mm

# Evacuated Bead Supports

- Inner lining prevents pump blockage/bead spillage
- New heavy duty lightweight materials
- Welded seams to prevent contamination
- Wipe clean waterproof outer
- Repair service available
- Angled connector
- MRSA resistant cover (Log2)
- Custom made sizes available upon request



## EVACUATED BEAD SUPPORT - TRUNK SECTION

**TB/003A** EVAC TRUNK SECTION WITH CUT OUT

SIZE: 34" x 26" (864mm x 660mm)

**TB/003B** EVAC TRUNK SECTION WITH CUT OUT

SIZE: 34" x 34" (864mm x 864mm)

**TB/004A** EVAC TRUNK SECTION WITHOUT CUT OUT

SIZE: 34" x 26" (864mm x 660mm)

**TB/004B** EVAC TRUNK SECTION WITHOUT CUT OUT

SIZE: 34" X 34" (864mm x 864mm)



## EVACUATED BEAD SUPPORT - FULL BODY

**TB/001A** FULL BODY EVAC SIZE: 73" x 26" (1854mm x 660mm)

**TB/001B** FULL BODY EVAC SIZE: 73" x 34" (1854mm x 864mm)



## EVACUATED BEAD SUPPORT

**HORSE SHOE HEAD REST**

**TB/006** 14" (356mm) L x 14" (356mm) W



## EVACUATED BEAD SUPPORT HEAD PILLOW

**TB/005** 14" (356mm) L x 16" (406mm) W



## EVACUATED BEAD SUPPORT CHEST

**TB/002A** 31" (787mm) x 26" (660mm)

**TB/002B** 31" (787mm) x 34" (864mm)



## EVACUATED BEAD SUPPORT FOOT SECTION

**TB/007** 21" (533mm) L x 21" (53mm) W

**REPLACEMENT EVAC SHUT-OFF VALVE**

**TB/EV**

- Evacuated Bead Supports can be manufactured to any shape, size or thickness - contact us for a quote.
- Repair and re-bead service is also available - prices on request.

# Metalwork Furniture

All Metalwork Furniture is manufactured from high grade medical Stainless Steel and a full range of furniture can be manufactured including bespoke items upon request.

## Surgeon Stools & Steps

Surgeon Stools are manufactured with a range of height adjustment options and also with a choice of feet or castors, including automatic locking castors and a foot rest bar. Replacement seat and backrest pads are made from high grade inner polyurethane and latex free polyurethane covers. Weight Limit 130kg.

## Instrument, Dressing and Linen Trolleys

All products are manufactured to various standard sizes and bespoke sizes are available upon request. Shelf types can also be altered as required.

Additional bumpers and Identification rings in various colours, are also available upon request.

## Transfusion Stands

Transfusion Stands are made as either light or heavy weight and with a number of hook options which include standard and pigtail hooks.

Storage boxes and shelves can also be fitted to the Transfusion Stands upon request.



- Metalwork can be custom built to meet your requirements.
- Please contact us for assistance.

# Surgeon Stools & Steps



## SURGEON STOOL - SPIN SEAT HEIGHT ADJUSTMENT

**TT/420** 4 LEG WITH RUBBER STOOL FEET

**TT/422** 5 LEG WITH RUBBER STOOL FEET

**TT/423** 5 CASTOR

SUPPLIED WITH 3 LOCKING CASTORS AS STANDARD



## SURGEON STOOL - GAS STRUT HEIGHT ADJUSTMENT

**TT/422G** 5 LEG WITH RUBBER STOOL FEET

**TT/423G** 5 CASTOR

SUPPLIED WITH 3 LOCKING CASTORS AS STANDARD



## SURGEON STOOL - FOOT OPERATED GAS STRUT HEIGHT ADJUSTMENT

**TT/422FG** 5 LEG WITH RUBBER STOOL FEET

**TT/423FG** 5 CASTOR

SUPPLIED WITH 3 LOCKING CASTORS AS STANDARD



## SURGEON STEP - SINGLE

**TM/119A** SURGEON SINGLE STEP (RUBBER TREAD) 18" (457mm) x 12" (305mm) x 6" (152mm)

**TM/119B** SURGEON SINGLE STEP (RUBBER TREAD) 30" (762mm) x 12" (305mm) x 6" (152mm)

**TM/119C** SURGEON SINGLE STEP (RUBBER TREAD) 30" (762mm) x 12" (305mm) x 8" (203mm)

**TM/119A/AL** SURGEON SINGLE STEP (ALUMINIUM TREAD) 18" (457mm) x 12" (305mm) x 6" (152mm)

**TM/119B/AL** SURGEON SINGLE STEP (ALUMINIUM TREAD) 30" (762mm) x 12" (305mm) x 6" (152mm)

**TM/119C/AL** SURGEON SINGLE STEP (ALUMINIUM TREAD) 30" (762mm) x 12" (305mm) x 8" (203mm)



## SURGEON STEP - TWO TIER

**TM/120A** SURGEON STEP - TWO TIER WITH ALUMINIUM TREAD PLATES  
(STEP SIZE 18" W x 12" D x 18" H)

**TM/120B** SURGEON STEP - TWO TIER WITH RUBBER TREAD PLATES  
(STEP SIZE 18" W x 12" D x 18" H)



# Surgeon Chair & Surgeon Stools with Backrest



## **SURGEON CHAIR**

- TT/428** 5 CASTOR - SPIN SEAT HEIGHT ADJUSTMENT
  - TT/428G** 5 CASTOR - GAS STRUT HEIGHT ADJUSTMENT
  - TT/428FG** 5 CASTOR - FOOT OPERATED GAS STRUT HEIGHT ADJUSTMENT
- ALL CHAIRS SUPPLIED WITH 3 LOCKING CASTORS AS STANDARD



## **SURGEON STOOLS WITH BACKREST**

- TT/426** 5 LEG WITH RUBBER STOOL FEET - SPIN SEAT HEIGHT ADJUSTMENT
- TT/426G** 5 LEG WITH RUBBER STOOL FEET - GAS STRUT HEIGHT ADJUSTMENT
- TT/426FG** 5 LEG WITH RUBBER STOOL FEET - FOOT OPERATED GAS STRUT HEIGHT ADJUSTMENT

## **SURGEON STOOLS WITH BACKREST**

- TT/427** 5 CASTOR - SPIN SEAT HEIGHT ADJUSTMENT
- TT/427G** 5 CASTOR - GAS STRUT HEIGHT ADJUSTMENT
- TT/427FG** 5 CASTOR - FOOT OPERATED GAS STRUT HEIGHT ADJUSTMENT

# Accessories



## STOOL COVER

**TT/202** STOOL COVER  
STANDARD SIZE 13" DIA (330mm)  
OTHER SIZES AVAILABLE ON REQUEST.



## PERSONALISE YOUR EQUIPMENT

**TM/ID** SURGEON STOOL IDENTIFICATION RING®  
A CHOICE OF COLOURS ARE AVAILABLE  
PLEASE CONTACT US FOR MORE DETAILS.



## LOCKING CASTOR (MANUAL)

**TT/LCM** REPLACEMENT MANUAL LOCKING  
TWIN WHEEL CASTORS.



## LOCKING CASTOR (AUTOMATIC)

**TT/LCA** REPLACEMENT AUTOMATIC LOCKING  
TWIN WHEEL CASTORS.



## LARGER SEAT OPTION

**LS/16** A LARGER 16" (406mm) DIA SEAT  
IS ALSO AVAILABLE.



## STOOL / STEP REPLACEMENT FEET

**TT/212** REPLACEMENT FEET  
PLEASE STATE LEG DIA ON YOUR ORDER.  
19mm & 25mm AVAILABLE.



## BACK REST PAD FOR SURGEONS STOOL

**TT/20B** REPLACEMENT BACKREST PAD  
1" (25mm) THICK



## REPLACEMENT ARM REST PADS (PAIR)

**TT/201** REPLACEMENT ARM REST PADS (PAIR)

# Dressing & Linen Trolleys



## DRESSING TROLLEY WITH DRAWER

REMOVEABLE TOP WITH OPEN TYPE DRAWER.  
BOTTOM SHELF FOLDED UP 1" ON ALL SIDES.  
SUPPLIED WITH 2 LOCKABLE WHEELS AS STANDARD.

**TM/105A**

18" (457mm) x 18" (457mm) x 34" (864mm) H

**TM/105B**

24" (610mm) x 18" (457mm) x 34" (864mm) H

**TM/105C**

30" (762mm) x 18" (457mm) x 34" (864mm) H

**TM/105D**

36" (914mm) x 18" (457mm) x 34" (864mm) H



## SOILED LINEN TROLLEY

**TM/112** SOILED LINEN TROLLEY - SINGLE

**TM/115** SOILED LINEN TROLLEY - TWIN

**TM/116** SOILED LINEN TROLLEY - SINGLE  
WITH PLATFORM.

LINEN BAGS NOT SUPPLIED.



## MAYO TABLE WITH TRAY

**TM/000** SUPPLIED WITH 2 LOCKING CASTORS  
AS STANDARD.

20" (508mm) x 15" (381mm)

ADJUSTABLE HEIGHT:

37" (940mm) - 55" (1394mm) MAX

**TM/001** REPLACEMENT MAYO TRAY



## GEL MAYO TABLE COVER

**MG/129** 20" (508mm) x 15" (381mm)

TO FIT STANDARD MAYO TRAY.

CAN BE SUPPLIED WITH OR WITHOUT POCKET.

CAN BE SUPPLIED TO OWN SPECIFICATION.



## PLASTER TROLLEY

**TM/104** PLASTER TROLLEY

COMPRISES OF SEPARATE WOUND  
DRESSING / BANDAGE COMPARTMENTS,  
1 METRE MEASURING RULE, PLASTER  
BUCKET AND FOLD DOWN TRAY.  
SUPPLIED WITH 2 LOCKABLE CASTORS  
AS STANDARD.



PERSONALISE YOUR  
EQUIPMENT; SEE PAGE  
31 FOR OUR ID RING®

- If you are unable to find what you require please note we can bespoke manufacture.
- Please contact us for further assistance.

# Instrument Trolleys



## INSTRUMENT / DRESSING TROLLEY WITH FLUSH WELDED SHELVES

TWO SHELVES WITH ALL SIDES TURNED DOWN 1" TO GIVE A SMOOTH UNOBSTRUCTED SURFACE. SUPPLIED WITH NON-LOCKABLE CASTORS AS STANDARD, SEE PAGE 31 FOR LOCKABLE CASTORS.

- TM/100A** 18" (457mm) x 18" (457mm)  
34" (864mm) H
- TM/100B** 24" (610mm) x 18" (457mm)  
34" (864mm) H
- TM/100C** 30" (762mm) x 18" (457mm)  
34" (864mm) H
- TM/100D** 36" (914mm) x 18" (457mm)  
34" (864mm) H



## INSTRUMENT / DRESSING TROLLEY WITH REVERSIBLE TRAY / SHELVES

TWO SHELVES EACH WITH THREE SIDES TURNED UP / DOWN FOR USE AS AN INSTRUMENT TROLLEY / DRESSING TROLLEY. SUPPLIED WITH NON-LOCKABLE CASTORS AS STANDARD, SEE PAGE 31 FOR LOCKABLE CASTORS.

- TM/101A** 18" (457mm) x 18" (457mm)  
34" (864mm) H
- TM/101B** 24" (610mm) x 18" (457mm)  
34" (864mm) H
- TM/101C** 30" (762mm) x 18" (457mm)  
34" (864mm) H
- TM/101D** 36" (914mm) x 18" (457mm)  
34" (864mm) H



## INSTRUMENT TROLLEY WITH REMOVABLE SHELVES

TWO REMOVABLE FLAT SHELVES WITH CANT CORNERS, RESTING ON RUBBER BUFFERS, CAN ALSO BE SUPPLIED WITH OPTIONAL GUARD RAIL AROUND THREE SIDES OF UPPER SHELF. SUPPLIED WITH NON-LOCKABLE CASTORS AS STANDARD, SEE PAGE 31 FOR LOCKABLE CASTORS.

- TM/102A** 18" (457mm) x 18" (457mm)  
34" (864mm) H
- TM/102B** 24" (610mm) x 18" (457mm)  
34" (864mm) H
- TM/102C** 30" (762mm) x 18" (457mm)  
34" (864mm) H
- TM/102D** 36" (914mm) x 18" (457mm)  
34" (864mm) H



## INSTRUMENT TROLLEY WITH TRAY / FIXED SHELVES

SHELVES ARE FOLDED UP 1" ON THREE SIDES TO FORM A GUARD RAIL WITH THE FRONT EDGE FOLDED DOWN 1" AND FLUSH WELDED TO THE LEGS. SUPPLIED WITH NON-LOCKABLE CASTORS AS STANDARD, SEE PAGE 31 FOR LOCKABLE CASTORS.

- TM/103A** 18" (457mm) x 18" (457mm)  
34" (864mm) H
- TM/103B** 24" (610mm) x 18" (457mm)  
34" (864mm) H
- TM/103C** 30" (762mm) x 18" (457mm)  
34" (864mm) H
- TM/103D** 36" (914mm) x 18" (457mm)  
34" (864mm) H

- If you are unable to find what you require we can manufacture bespoke items.



# Trolleys & Accessories



## LARGE ANAESTHETIC ADJUSTABLE SCREEN

**TM/118** ANAESTHETIC SCREEN IS ADJUSTABLE IN WIDTH FROM MINIMUM 60" (1524mm) TO MAXIMUM 108" (2743mm). THE HEIGHT IS ADJUSTABLE FROM MINIMUM 55" (1397mm) TO MAXIMUM 90" (2286mm).



## PERINEAL TRAY

**TM/122** PERINEAL TRAY COMPLETE WITH CLAMPS  
SIZE 16.5" (419mm) x 8" (203mm)  
PLEASE STATE OPERATING TABLE MODEL AND SERIAL  
NUMBER WHEN ORDERING.



## ACCESSORY TROLLEY

**TM/106** ACCESSORY TROLLEY TOP SHELF WITH 1" SIDES  
TURNED UP 30" L (762mm) x 8" W (203mm).  
BOTTOM SHELF WITH 1" SIDES TURNED UP  
30" L (762mm) x 18" W (457mm).  
OVERALL HEIGHT OF TROLLEY 34".  
SUPPLIED WITH 3 ACCESSORY BARS FITTED. BARS CAN  
BE UK OR EUROPEAN OR COMBINATION OF BOTH.



## ADJUSTABLE OVER BED INSTRUMENT TROLLEY

**TM/125** ADJUSTABLE OVER BED INSTRUMENT TROLLEY  
PLEASE STATE SIZE OF TRAY AND HEIGHT  
REQUIREMENTS



## ORTHOPAEDIC INSTRUMENT TROLLEY

**TM/107** ORTHOPAEDIC INSTRUMENT TROLLEY WITH SIX FIXED  
AND FLUSH WELDED SHELVES FOR UNOBSTRUCTED  
ACCESS. 36" W (915mm) x 24" D (610mm) x 64"  
(1625mm) H.  
SUPPLIED WITH 4 LOCKING CASTORS AS STANDARD.



## INSTRUMENT TROLLEY AND CONTAINER COVER

**TM/COV** MANUFACTURED TO  
ANY SIZE.  
2 FRONT CORNER ZIPS.  
BESPOKE SCREEN  
PRINT AVAILABLE.



PERSONALISE YOUR EQUIPMENT  
SEE PAGE 31 FOR OUR ID RING®

# Bowl Stands & Accessories



## OVERBED BOWL STANDS

**TM/123** SINGLE

**TM/124** DOUBLE

**TM/114** STAINLESS STEEL BOWL 14" DIA.  
BOWLS SUPPLIED SEPARATELY.



## SOILED DRESSING CONTAINER

**TM/113** SOILED DRESSING CONTAINER  
SUPPLIED COMPLETE WITH 14" DIA  
STAINLESS STEEL BOWL



## BOWL STAND SINGLE

**TM/108** SINGLE. 35.5" (902MM) H WITH  
14" DIA BOWL RING

**TM/114** STAINLESS STEEL BOWL 14" DIA  
SUPPLIED AS STAND ONLY



## BOWL STAND DOUBLE

**TM/110** BOWL STAND - DOUBLE  
35.5" (902mm) H WITH 2 x 14" DIA  
BOWL RINGS. SUPPLIED AS STAND ONLY

## BOWLS & BUCKETS

**TM/114** STAINLESS STEEL BOWL 14" DIA

**TM/114B** STAINLESS STEEL BUCKET 12" DIA 10 LITRE



## BOWL STAND TWO TIER

**TM/109** BOWL STAND - TWO TIER  
35.5" (902MM) H WITH 2 X 14" DIA  
BOWL RINGS

**TM/114** STAINLESS STEEL BOWL 14" DIA  
SUPPLIED AS STAND ONLY



## BUCKET STAND

**TM/121** BUCKET STAND  
35.5" (902MM) H WITH 12" DIA  
BUCKET RING. SUPPLIED AS STAND ONLY



## IDENTIFICATION RINGS

**TM/ID** IDENTIFICATION RING®  
PERSONALISE YOUR EQUIPMENT WITH OUR  
IDENTIFICATION RINGS.

A VARIETY OF COLOURS ARE AVAILABLE,  
PLEASE CONTACT US FOR FURTHER DETAILS.



## TROLLEY BUMPERS

**TM/BP** TROLLEY BUMPERS CAN BE FITTED  
TO ALL OUR TROLLEYS AS AN OPTIONAL EXTRA,  
PLEASE ADD ORDERING CODE **TM/BP** TO YOUR ORDER.



## LOCKING CASTORS

**TM/LC** LOCKING CASTORS CAN BE FITTED  
TO ALL OUR TROLLEYS AS AN OPTIONAL  
EXTRA, PLEASE ADD ORDERING CODE  
**TM/LC** AND QUANTITY REQUIRED.

# Transfusion Stands



TRANSFUSION STANDS ARE MANUFACTURED FROM STAINLESS STEEL INCLUDING HEIGHT ADJUSTING FIXING SCREW. HEIGHT ADJUSTABLE (1350mm TO 2140mm).

AVAILABLE AS HEAVY (9 KILO APPROX.) OR LIGHTWEIGHT (4 KILO APPROX.), 5 LEG BASE WITH ANTI STATIC TWIN WHEEL CASTORS.



**TRANSFUSION STAND WITH 2 HOOKS**  
**TM/117H/2H** TRANSFUSION STAND WITH 2 HOOKS - HEAVY  
**TM/117L/2H** TRANSFUSION STAND WITH 2 HOOKS - LIGHT



**TRANSFUSION STAND WITH 2 PIGTAIL HOOKS**  
**TM/117H/2P** TRANSFUSION STAND WITH 2 PIGTAIL HOOKS - HEAVY  
**TM/117L/2P** TRANSFUSION STAND WITH 2 PIGTAIL HOOKS - LIGHT



**TRANSFUSION STAND WITH 4 HOOKS**  
**TM/117H/4H** TRANSFUSION STAND WITH 4 HOOKS - HEAVY  
**TM/117L/4H** TRANSFUSION STAND WITH 4 HOOKS - LIGHT



**TRANSFUSION STAND WITH DOUBLE HOOKS**  
**TM/117H/DH** TRANSFUSION STAND WITH DOUBLE HOOKS - HEAVY  
**TM/117L/DH** TRANSFUSION STAND WITH DOUBLE HOOKS - LIGHT



**TRANSFUSION STAND WITH 4 PIGTAIL HOOKS**  
**TM/117H/4P** TRANSFUSION STAND WITH 4 PIGTAIL HOOKS - HEAVY  
**TM/117L/4P** TRANSFUSION STAND WITH 4 PIGTAIL HOOKS - LIGHT



PERSONALISE YOUR EQUIPMENT; SEE PAGE 31 FOR OUR ID RING®

- If you are unable to find what you require we can manufacture bespoke items.

# Trolley Mattresses & Side Rail Covers

Trolley mattresses are manufactured from high resilient foam interiors with an Anti Static Neoprene covering or a wipe clean vapour permeable multi- stretch and waterproof Polyurethane fabric.

- Manufactured to your specification where required
- Mattresses made to fit all types / makes of trolley
- All materials are Latex free
- All mattresses are X-Ray translucent
- Non-slip base upon request
- Loose cover and inspection zip upon request
- Active Trolley Mattress also available



ALL  
TROLLEY  
MATTRESS  
MODELS  
AVAILABLE

- TT/160** TROLLEY MATTRESS  
**TT/160S** TROLLEY MATTRESS - SHAPED END  
**PR/003** PRESSURE RELIEVING TROLLEY MATTRESS  
**PR/003S** PRESSURE RELIEVING TROLLEY MATTRESS SHAPED END

PLEASE STATE MODEL OF TROLLEY WHEN ORDERING. CHOOSE FITTINGS: HOOKS, VELCRO OR NON-SLIP BASE. PLEASE PROVIDE ALL DIMENSIONS; LENGTH, WIDTH AND DEPTH AND WHETHER A HINGE IS REQUIRED.

- TT/213** TROLLEY / COT SIDE RAIL COVERS T-COSY TYPE (PAIR)  
**TS/213** TROLLEY / COT SIDE RAIL COVERS ONE SIDED WITH VELCRO FASTENING
- PLEASE PROVIDE THE SIZE OF THE SIDE RAIL WHEN ORDERING. COVERS ARE AVAILABLE IN BLACK, BLUE, GREEN OR NURSERY PATTERN. OTHER COLOURS MAY BE AVAILABLE UPON REQUEST.





# TRANSFOAM ACTIVE

## Hybrid Trolley Mattress

The Transfoam Active trolley mattress from Teasdale offers a hybrid solution for high risk patients who would benefit from increased comfort and protection against pressure sore development whilst on a trolley.

The system can be stepped up or down to respond quickly to changes in patient requirements.

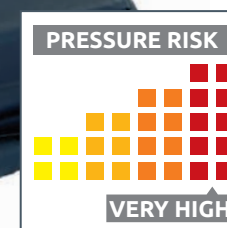
### Features

- Multi stretch, waterproof, vapour permeable cover
- Audible and visual alarm
- All inner components individually replaceable
- Welded seams
- Normal, static and CPR functions

### Benefits

- Upper weight limit 248kg (39 Stone)
- Minimum weight limit 19kg (3 Stone)
- Range of sizes to fit all trolleys
- Provides greater patient comfort and support
- Static mode inflates all cells to maximum setting for patient transfer and additional support for nursing procedures
- Offers the flexibility of a static Very High Risk mattress combined with the internal features of a High/Very High Risk dynamic mattress
- Eliminates any risk of incorrect settings should a patient require a sitting or lying position
- The pump automatically provides patients with different comfort settings, dependant to the patient's weight

HYBRID TROLLEY MATTRESS  
TF/ACT/TM HYBRID TROLLEY MATTRESS



# Personal Protective Equipment

High quality Personal Protective Equipment that meets all UK and EU requirements

Other PPE items available upon request, which include;

- Hand Sanitiser
- FFP2 and FFP3 masks
- Goggles



## SCRUB UNIFORM

- TP/01ST SURGICAL SCRUB TOP - SMALL
- TP/01M SURGICAL SCRUB TOP - MEDIUM
- TP/01LT SURGICAL SCRUB TOP - LARGE
- TP/02ST SURGICAL SCRUB TROUSERS - SMALL
- TP/02M SURGICAL SCRUB TROUSERS - MEDIUM
- TP/02LT SURGICAL SCRUB TROUSERS - LARGE

## FACE SHIELD - PACK OF 25

- TP/03 FACE SHIELD - STANDARD
- TP/04 FACE SHIELD - PREMIUM



## TYPE IIR SURGICAL MASK - BOX OF 50

- TP/05 TYPE IIR SURGICAL MASK



## PLASTIC APRON - PACK OF 100

- TP/07 PLASTIC APRON



## NITRILE GLOVES - PACK OF 100

- TP/06S NITRILE GLOVES - SMALL
- TP/06M NITRILE GLOVES - MEDIUM
- TP/06L NITRILE GLOVES - LARGE
- TP/06LS NITRILE GLOVES - LONG SLEEVE



# Arm/Leg Retainers & Anaesthetic Tube Holders

Arm/Leg Retainers and Anaesthetic Tube Holders are manufactured from Polycarbonate giving various benefits:

- Shatterproof
- No sharp edges
- Will not splinter
- Flame resistant
- Bespoke sizes upon request

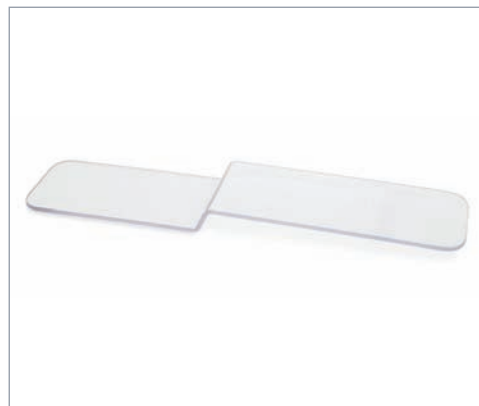




**HEPWORTH LEG SUPPORT**  
AA/012 HEPWORTH LEG SUPPORT



**ARM RETAINERS 'L' TYPE**  
AA/005 ARM RETAINER 'L' TYPE 5" (127mm) H  
AA/008 ARM RETAINER 'L' TYPE 8" (203mm) H  
AA/009 ARM/LEG RETAINER 'L' TYPE 9" (229mm) H



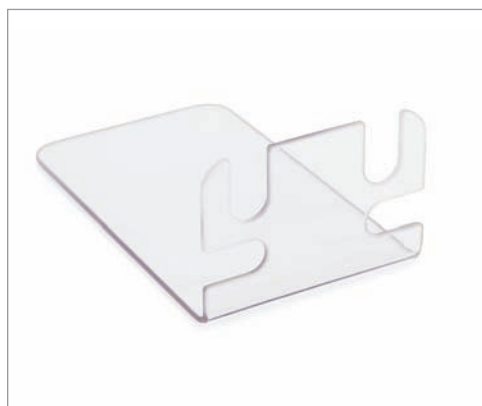
**ARM RETAINER 'STEP' TYPE**  
AA/008S ARM RETAINER 'STEP' TYPE



**ARM RETAINER 'J' TYPE**  
AA/008J ARM RETAINER 'J' TYPE



**ANAESTHETIC TUBE HOLDER 'FLAT' TYPE**  
AA/010 ANAESTHETIC TUBE HOLDER 'FLAT'



**ANAESTHETIC TUBE HOLDER 'L' TYPE**  
TT/192 ANAESTHETIC TUBE HOLDER 'L' TYPE

- Personalise your gels;  
4 colour options available; **blue, red, lime green & orange;**  
rear outer skin or standard green for easy departmental identification



**ARM / LEG RETAINER T-COSY PAD**  
TT/141 5" (127mm) T-COSY  
FOR ARM RETAINER; AA/005  
TL/141 8" (203mm) T-COSY  
FOR ARM RETAINER; AA/008, AA/008S  
& AA/008  
TL/209 9" (229mm) T-COSY  
FOR ARM / LEG RETAINER; AA/009



**ARM/LEG RETAINER GEL PAD**  
MG/115 5" (127mm) GEL PAD WITH POCKET  
FOR ARM RETAINER; AA/005  
MG/116 8" (203mm) GEL PAD WITH POCKET  
FOR ARM RETAINER; AA/008, AA/008S  
& AA/008J  
MG/141 9" (229mm) GEL PAD WITH POCKET  
FOR ARM / LEG RETAINER; AA/009



# Tourniquets & Connectors

Teasdale Anti Static Pneumatic Tourniquet Cuffs are manufactured:

**Outer:** Anti Static Neoprene coated onto a high tenacity nylon weave.

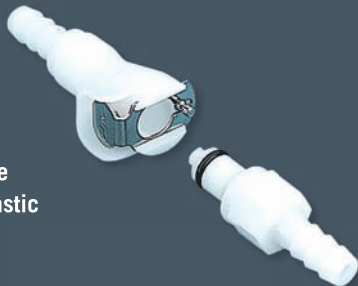
**Interior:** Radio frequency welded Polyurethane.

All Cuffs are supplied with CPC connectors and a crush resistant inlet tube.

- Manufactured to customer specification where required
- Manufactured to all current required British and European standards
- All materials are Latex free
- High performance
- Quality Assurance registered to ISO 9001:2015
- CE marked

CPC connectors are made from a durable thermoplastic with good resistance to chemical attack.

- Ideal for Pneumatic applications
- C0/100 has an automatic latching system that provides quick and easy "one hand" connection and disconnection
- A distinct click assures the connectors are locked
- The cuff side connector can be supplied with a non-return valve (keeping the cuff inflated while disconnected from the pump)



## ANTI STATIC TOURNIQUET CUFFS

ANTI STATIC TOURNIQUET CUFFS ARE SUPPLIED WITH CUFF SIDE CONNECTORS AS STANDARD;

- SS/012** SINGLE CHAMBER 12" (305mm) x 2" (51mm)
- SS/018** SINGLE CHAMBER 18" (457mm) x 4" (102mm)
- SN/018** SINGLE NARROW CHAMBER 18" (457mm) x 2.5" (64mm)
- SS/024** SINGLE CHAMBER 24" (610mm) x 5" (127mm)
- SN/024** SINGLE NARROW CHAMBER 24" (610mm) x 3" (76mm)
- SS/034** SINGLE CHAMBER 34" (864mm) x 5" (127mm)
- SN/034** SINGLE NARROW CHAMBER 34" (864mm) x 3" (76mm)
- SS/044** SINGLE CHAMBER 44" (1118mm) x 5" (127mm)
- SN/044** SINGLE NARROW CHAMBER 44" (1118mm) x 3" (76mm)
- DN/012** DOUBLE CHAMBER 12" (305mm) x 4" (102mm)
- DN/018** DOUBLE CHAMBER 18" (457mm) x 5" (127mm)
- DN/024** DOUBLE CHAMBER 24" (610mm) x 5.5" (140mm)
- DN/034** DOUBLE CHAMBER 34" (864mm) x 5.5" (140mm)
- DN/044** DOUBLE CHAMBER 44" (1118mm) x 5.5" (140mm)

## ESMARCH BANDAGES

- EB/200** 12FT (3658mm) x 3" (76mm)
- EB/201** 6FT (1829mm) x 3" (76mm)

## TOURNIQUET CUFFS - SINGLE USE

TOURNIQUET CUFFS - SINGLE USE ARE SUPPLIED WITH CUFF SIDE CONNECTORS AS STANDARD;

- SU/012** 12" (305mm) x 2" (51mm)
- SU/018** 18" (457mm) x 4" (102mm)
- SU/024** 24" (610mm) x 5" (127mm)
- SU/034** 34" (864mm) x 5.5" (140mm)
- SU/044** 44" (1118mm) x 5.5" (140mm)

## ACCESSORIES

- C0/100** CUFF CONNECTOR (CPC) PUMP SIDE
- C0/101** CUFF CONNECTOR (CPC) CUFF SIDE
- C0/101NR** CUFF CONNECTOR (CPC) CUFF SIDE NON RETURN
- C0/102** "O" RING FOR CONNECTOR C0/101



# Slide Sheets

Produced from silicone coated nylon fabric with anti-bacterial finish on both sides to provide long lasting low friction required for safe patient handling. The fabric is sewn into a continuous tube providing strength, durability and efficient repositioning.

- Designed for sliding transfers and repositioning
- Made of very low friction material enabling an independent or assisted sliding movement in one or more direction



## FLAT SLIDE SHEETS (WITH HANDLES)

**TS/202 STANDARD** 700mm x 2000mm  
**TS/202 LONG** 900mm x 1500mm  
**TS/202 WIDE** 900mm x 2000mm  
PLEASE STATE WHICH SIZE  
IS REQUIRED ON ORDERING



## TUBULAR SHEETS

**TS/203 COMPACT** 700mm x 720mm  
**TS/203 STANDARD** 1000mm x 1200mm  
**TS/203 LONG** 700mm x 2000mm  
**TS/203 WIDE** 1000mm x 2000mm  
PLEASE STATE WHICH SIZE  
IS REQUIRED ON ORDERING



## FLAT SLIDE SHEETS (NO HANDLES)

**TS/201 MINI** 400mm x 600mm  
**TS/201 COMPACT** 700mm x 720mm  
**TS/201 STANDARD** 700mm x 1250mm  
**TS/201 LONG** 700mm x 1450mm  
**TS/201 WIDE** 1000mm x 1250mm  
PLEASE STATE IF  
ALTERNATIVE SIZE  
IS REQUIRED



**TEASDALE NATIONAL HELPLINE 0161 480 5779**

Teasdale Healthcare Equipment Ltd, Unit 8, Crosland Industrial Estate, Stockport Road West, Bredbury, Stockport, SK6 2BR.

W: [www.teasdale-healthcare.com](http://www.teasdale-healthcare.com) • E: [sales@teasdaleltd.co.uk](mailto:sales@teasdaleltd.co.uk)

Follow us [!\[\]\(cbe80b694ebd74fcfe136a095b608235\_img.jpg\) @Teasdalehealthcare](#) [!\[\]\(27df6be88af07602ea392719b144fe7f\_img.jpg\) @TeasdaleLtd](#)